



Official Press Release

**Faulkner County, Arkansas
Solar Eclipse: The Path of Totality
April 8, 2024**



Faulkner County, Arkansas

Eclipse Information Guide

Faulkner County lies within the path of totality of the Great American Eclipse on April 8, 2024. During this event, many outdoor festivals, concerts, camping, eclipse viewing, and more will take place. The event will draw an influx of visitors to the area. As we countdown to the Eclipse on April 8, 2024, a variety of Faulkner County Agencies, including Faulkner County Judge's Office, Faulkner County Sheriff's Office, Faulkner County Office of Emergency Management, Faulkner County Road Department, and others, have come together in the effort to provide citizens and visitors with an information guide, including emergency information, roadway and traffic information, legal information, and helpful tips, to assist in ensuring all citizens and visitors have a safe and wonderful experience for the eclipse.

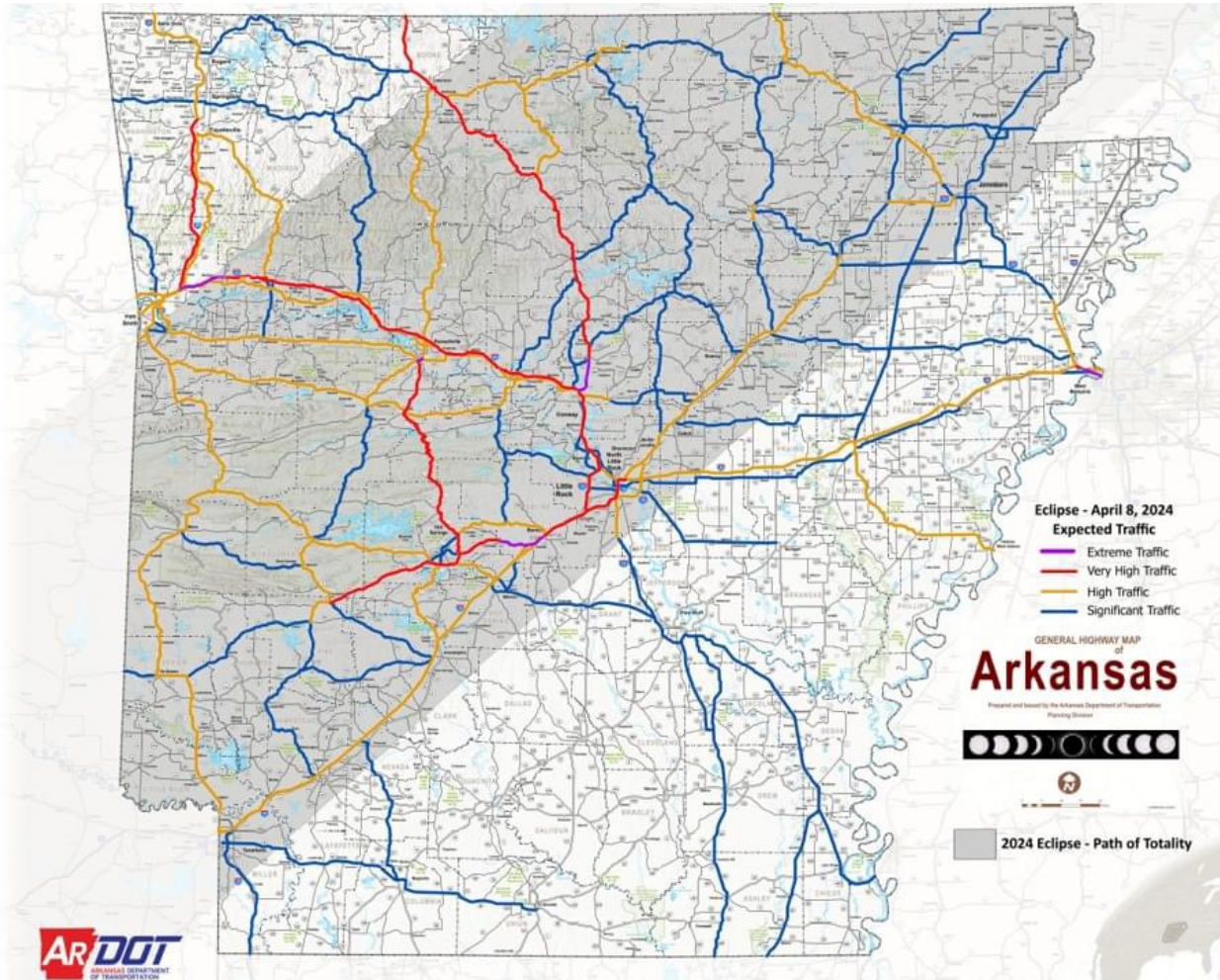
Background Information: It is predicted that up to 1.5 million people will travel from outside of the state into Arkansas, with an additional 500,000 Arkansans traveling to the path of totality. It is also predicted the influx of people will most likely run from around Friday, April 5, 2024, through Wednesday, April 10, 2024. Such an influx of visitors for this duration of time could put quite a strain on our infrastructure including food, gas, roadways, and other necessary supplies. As a result, citizens should prepare in advance to acquire certain needed items.

Citizen Preparation: To help our community prepare for the upcoming eclipse, and to not incite panic, we are providing a few helpful tips in the event the eclipse meets the predictions above.

- Stock up on groceries and any other household items that could be needed in advance to last from Thursday, April 4, 2024, to Thursday, April 11, 2024.
- Stock up on containers of water, if not on well water, in the event water supply is strained.
- Top off vehicle fuel supplies by Wednesday, April 3, 2024. This will assist in easing pressure on gas stations prior to the arrival of most visitors.
- Try to refill medications early, if needed, to last you through April 10, 2024.
- Keep a stock of batteries for different items: flashlights, medical equipment, etc.
- Allow plenty of time ahead on the roadways if traveling.
- Citizens are encouraged to have cash on hand to ensure you are able to make any necessary purchases for the week in the event that ATM or other electronic machines are not working and/or internet capability is interrupted as a result of the overflow of usage.

Arkansas Department of Transportation Traffic Predictions

The Arkansas Department of Transportation has predicted expected traffic flow across roadways in the path of totality. The current prediction map is available below:



Helpful Tips:

1. Communication:

- Establish a communication plan with your family and decide on a meeting point in case you get separated.
- Keep cell phones fully charged and have a backup power source.
- Landlines will possibly be the best option during the event due to the amount of people and lack of coverage.
- Share contact information with trusted neighbors or friends.

2. Emergency Contacts:

- Save important phone numbers, including local emergency services, on your phones.
- Keep a physical list of emergency contacts in case of power outages or phone failures.
- Faulkner County is equipped with Smart911. If you or a family member has a disability or special need in the event of an emergency and you are a user of Smart911, dispatch will have your medical information ready for first responders. To sign up for Smart911, download the Smart911 app on the Apple or GooglePlay stores.

3. Weather Awareness:

- Stay updated on the weather forecast leading up to the eclipse.
- Prepare for potential weather changes by having appropriate clothing and supplies.
- In the event of severe weather, various warning systems will be used to notify all of Faulkner County. This includes the Emergency Alert System (EAS) used by weather radio, commercial radio, and television stations. This will be an automatic alert if the weather service issues a severe warning. The National Alert and Warning System will be used to notify people in the warning area established by the National Weather Service.
- If a severe thunderstorm warning is issued, civilians and emergency personnel should seek shelter in a sturdy building if available. If a building is not available, a hard-topped motor vehicle can be used for protection from hail, wind and lightning.
- Should a tornado warning be issued, everyone (event staff and visitors) should seek shelter immediately in any available sturdy building. Once inside the sturdy building, people should shelter on the lowest floor possible and the most interior room without windows. The smaller the room, the better. In the event of severe weather, Emergency Management or other Emergency Services personnel in command have the authority above and beyond the Event Representative to make emergency changes or notifications, as the weather situation changes/progresses.

4. Eye Safety:

- Never look directly at the sun during the eclipse without certified solar viewing glasses.
- Purchase ISO 12312-2 compliant solar eclipse glasses from reputable vendors.
- Teach children about the importance of eye safety during the event.

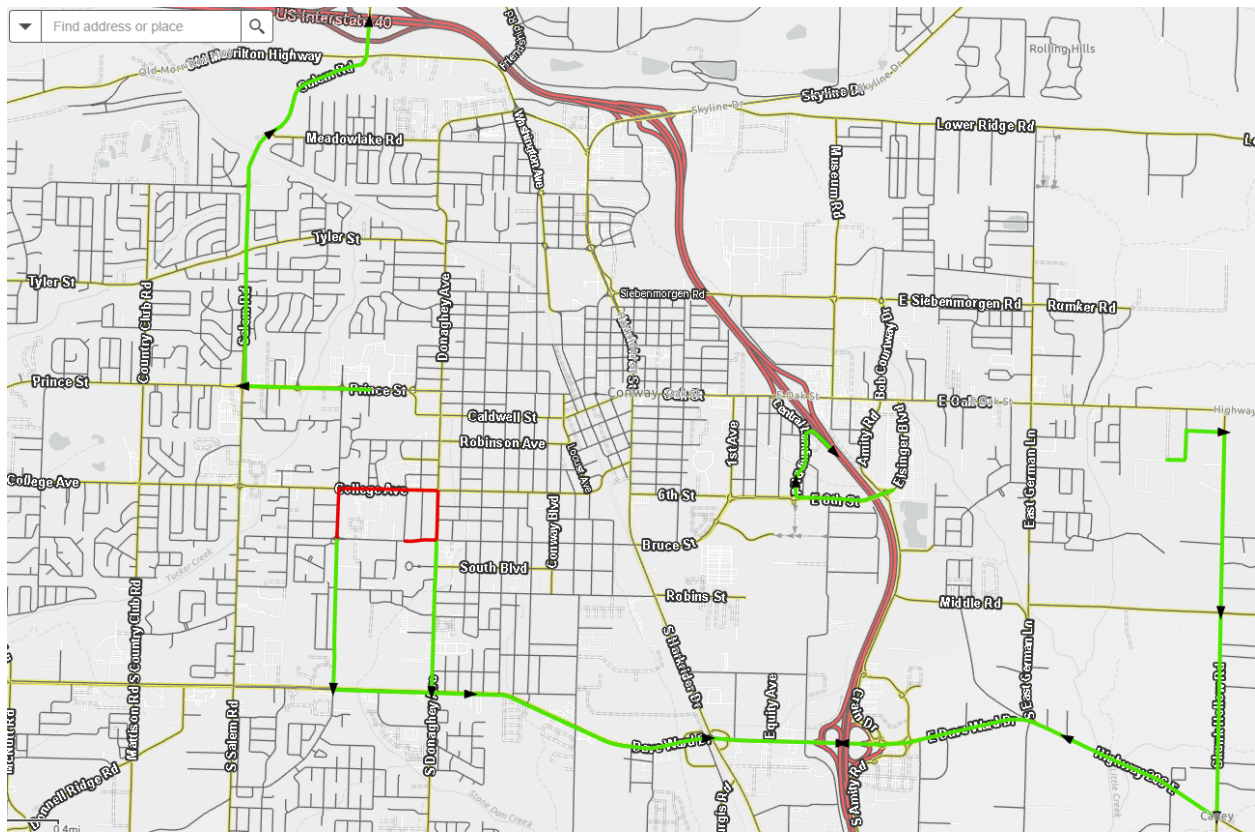
5. Pet Care:

- Ensure your pets have identification tags and are kept in a safe, secure area during the eclipse.
- Stock up on pet food, water, and any necessary medications.

6. Visitors

- If you do not want visitors on your property, make sure your property is properly marked and visible for individuals to see. Use purple paint and use signs placed not more than 100 feet apart and at each road entrance. The signs shall bear the words "POSTED" and/or "NO TRESPASSING" in letters at least 4 inches high. The signs shall be readily visible to any person approaching the property.

Road Closures: The City of Conway has announced road closures surrounding the eclipse. The only roads completely closed will be in the immediate vicinity leading to Conway Regional Medical Center. Traffic pattern adjustments will be made to Prince, Salem, Farris, Donaghey, Dave Ward, Elsinger, 6th St, Central Landing, and Skunk Hollow. The focus will be funneling traffic to the interstate after the eclipse. In addition, and not showcased on this map, traffic will not be allowed to turn left at Lower Ridge Rd and Skyline Dr.



Legal Information: If you are visiting Faulkner County from out of state or attending the eclipse from in state, please remember to have a great time, be safe and courteous, and follow all laws while here.

- Reminder: it is unlawful to enter private property, including fields, without permission from the property owner. Doing so could result in criminal charges.
- Please be respectful of your whereabouts and do your part in keeping our communities clean by cleaning up after yourself.
- Please do not drive under the influence of alcohol or other drugs, and please ensure you follow local laws related to alcohol consumption.
- Parking will not be permitted on roadways or highways.
- Individuals are prohibited from blocking or inhibiting traffic flow.

The Faulkner County Sheriff's Office will be in full force and have additional resources available to address the expected influx of travelers and calls for service.

- During these days, response to non-emergency calls might be slightly modified based on call load.
- Calls for service that require an immediate response will be handled by priority with the most emergent first.
- Call volume and traffic dependent, minor traffic collisions may be directed to exchange information and contact the appropriate agency beginning Wednesday, April 10, 2024, to file a report.

All of the above information will be dependent on the influx of travelers and call volume. The Faulkner County Sheriff's Office will notify the public of any major revisions. To receive updates from Faulkner County Sheriff's Office, please view the website press releases (www.fcsso.ar.gov/press), download our mobile app, and/or follow us on facebook (Faulkner County Sheriff's Office), Instagram (faulkner_countyso), or X (@CountyFaulkner).

Important numbers to save and have readily available:

- Emergency: Dial 911
- Faulkner County Sheriff's Office Non-Emergency Dispatch: 501-328-5906
- Baptist Health Medical Center-Conway: 501-585-2000
- Conway Regional Emergency Room: 501-329-3831

Remember, this informational plan is a general guideline. You should adapt it to your family's specific needs and circumstances. We hope everyone stays safe and enjoys the 2024 eclipse in Faulkner County, Arkansas!

Summary of Cities & Events within Faulkner County:

Many of our local citizens and universities have large scale events planned in the days surrounding the solar eclipse. The following is a summary of links to major events occurring within the county:

- **University of Central Arkansas:** <https://uca.edu/eclipse/events/>
- **Hendrix College:** <https://www.hendrix.edu/eclipse/>
- **Conway, Arkansas:** <https://visitconway.org/eclipse-conway/>
- **Greenbrier, Arkansas:** <https://www.gogreenbrier.com/eclipse>
- **Guy, Arkansas:** <https://www.facebook.com/CityOfGuyAr/>
- **Mayflower, Arkansas:** <https://mayflowercity.com/>
- **Vilonia, Arkansas:** <https://www.cityofvilonia.net/>