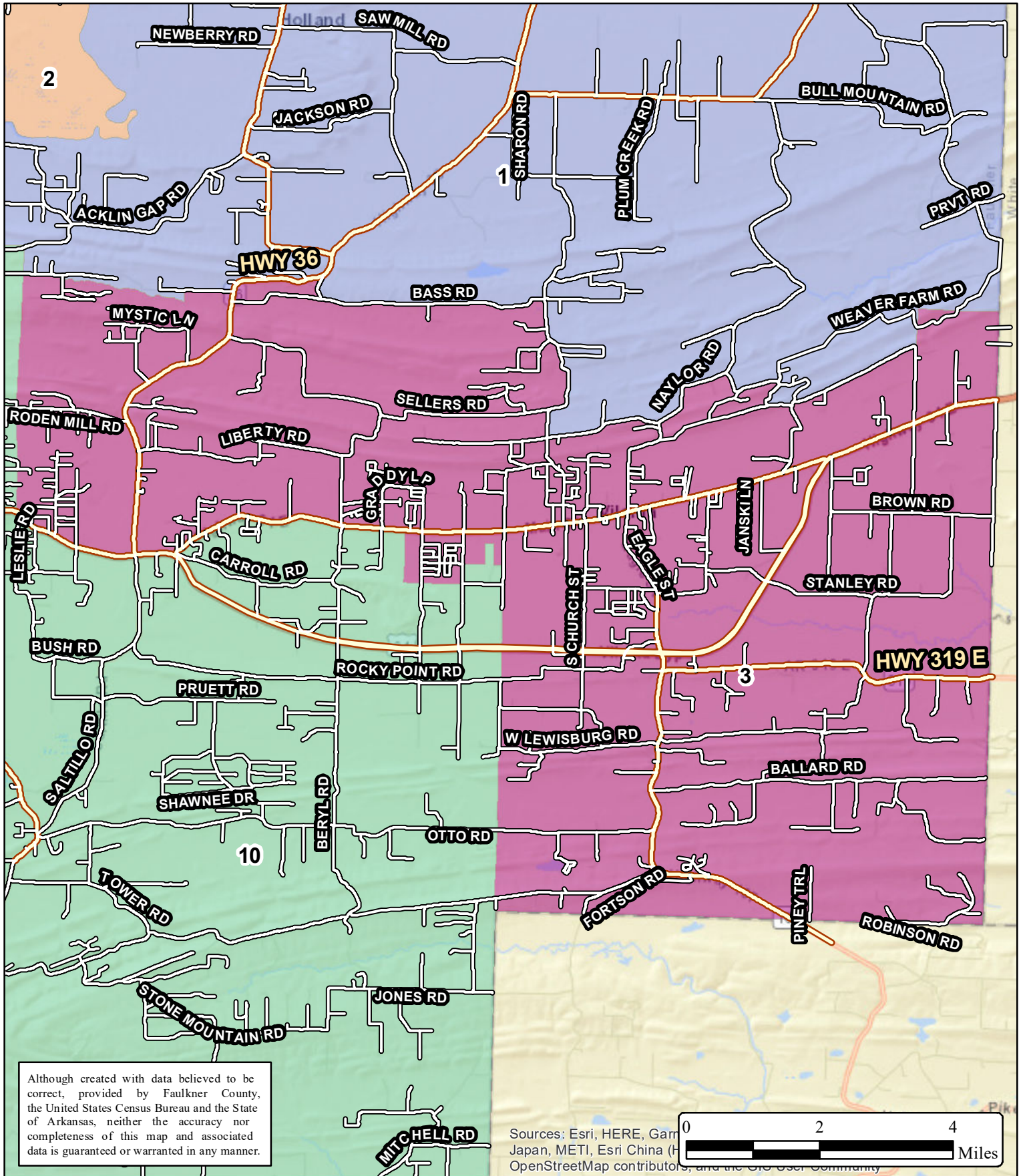




# Faulkner County

## Justice of the Peace District 3

Map Created: December 27, 2021



Although created with data believed to be correct, provided by Faulkner County, the United States Census Bureau and the State of Arkansas, neither the accuracy nor completeness of this map and associated data is guaranteed or warranted in any manner.

Sources: Esri, HERE, Garmin, Japan, METI, Esri China (H), OpenStreetMap contributors, and the GIS User Community